

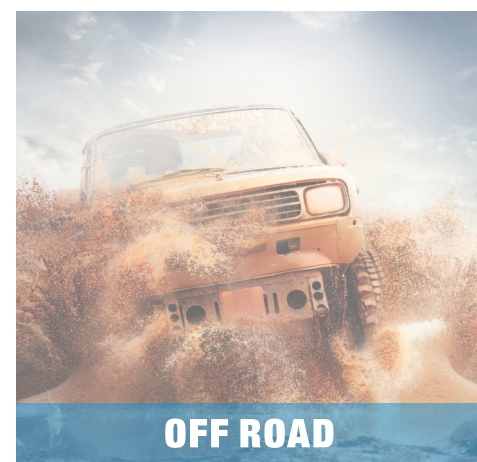


IWISS
www.iwiss.com

— For Environmentally Sealed Connections
AUTOMOTIVE REPAIR & SERVICE TOOL KIT —



Add:NO.198-208 Station Rd,Liushi,Wenzhou,325604,China.
Tel:0086-577-61786606 61727635 Fax:0086-577-61728848
E-mail: sherria@iwiss.com



IWISS KIT-DC01 Automotive Repair Tool Kit



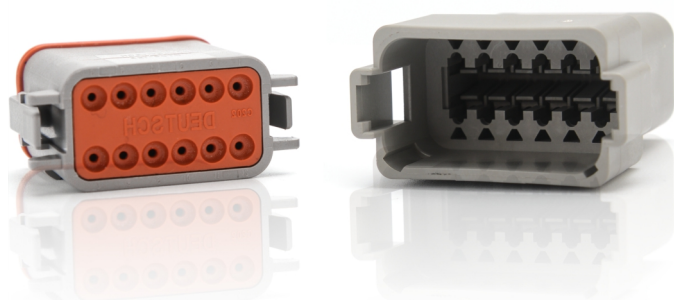
A complete 11 piece kit to crimp and release the most popular automotive specialized terminals found on cars, trucks, construction equipment, motorcycles, race cars, agricultural and marine equipment, heavy duty vehicles and other vehicles and equipment subject to excessive vibration and wherever an environmentally sealed connection is used

For use on:

- Deutsch open and closed barrel terminals
- Weather Pack terminals
- Metri Pack terminals
- Molex terminals
- Other open barrel terminals

Deutsch Solid Contact Crimp Tools

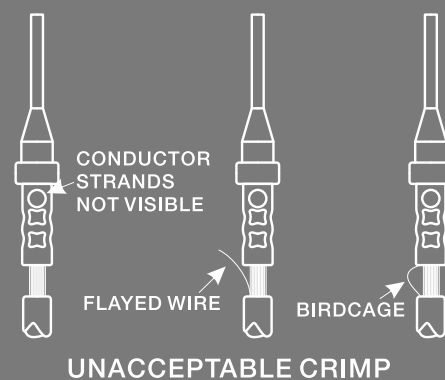
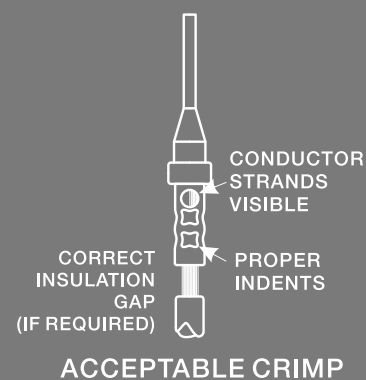
Part No.	IWD-12	IWD-16	IWD-20
Application	Closed Barrel Terminal		
Capacity	12AWG	18-14AWG	22-20AWG
Weight	0.64lb	0.64lb	0.64lb
Length	6.34inch	6.34inch	6.34inch
Profile	4 indent, 8 impression		



Deutsch terminals are designed to be environmentally sealed and hold tight in extreme conditions above and beyond standard automotive electrical terminals so when it comes time to replace or repair those terminals or wires, special tools are needed to disassemble them.



**QUALIFIED
CRIMP**



Deutsch Stamped Contact & Weather Pack Terminal Crimp Tool



Part No.	IWC-1424A	IWC-1424B
Application	Open Barrel Terminals	Weather Pack Terminals
Capacity	24-14AWG	24-14AWG
Weight	0.64lb	0.64lb
Length	6.34inch	6.34inch

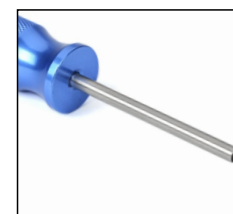
Weather Pack/Metri Pack is an environmentally sealed electrical connection system designed to withstand exposure to extreme temperatures, moisture, and harsh engine compartment fluids and chemicals. It is extensively used in tough applications including construction, off road, and farm equipment.



Automotive Terminal Removal Tools

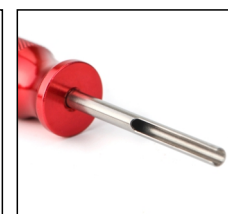
Deutsch terminals are designed to be environmentally sealed and hold tight in extreme conditions above and beyond standard automotive electrical terminals so when it comes time to replace or repair those terminals or wires, special tools are needed to disassemble them. The 6-Piece Deutsch Terminal & Weather Pack Terminal Removal Tool Kit was designed to do just that, to let you separate the wires from their terminals without causing damage to either.

Release Tools Included:



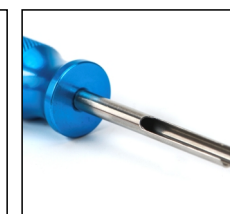
WR01

Weather Pack
16-18Gauge



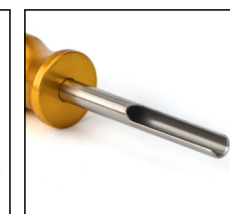
DR01

Deutsch Terminal
20-24Gauge



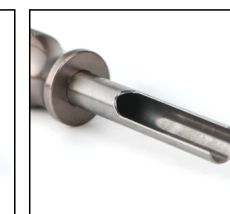
DR02

Deutsch Terminal
16-18Gauge



DR03

Deutsch Terminal
14-16Gauge



DR04

Deutsch Terminal
8-10Gauge



DR05

Deutsch Terminal
6Gauge